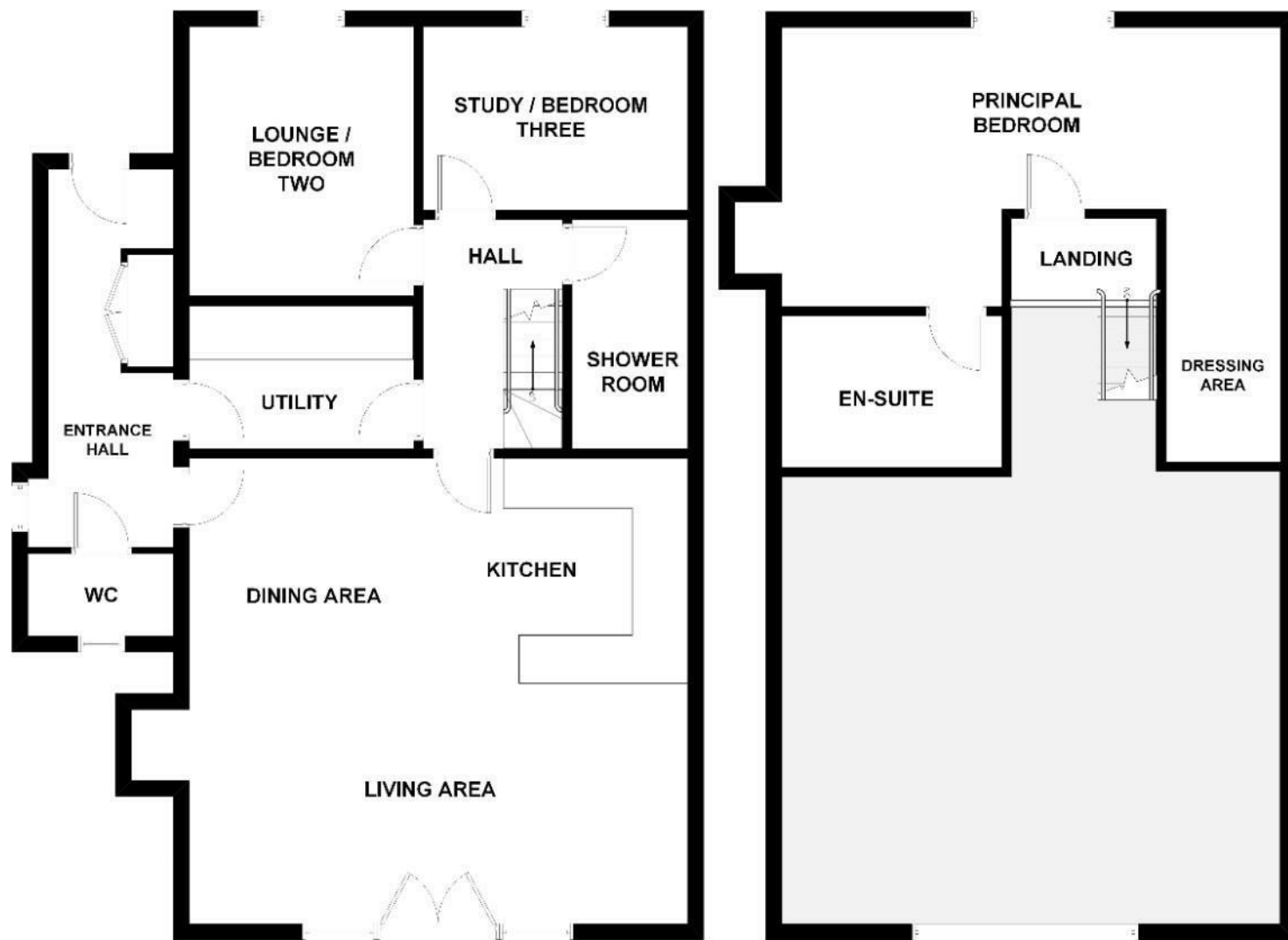


DANIEL BREWER

51 High Street
Great Dunmow
Essex, CM6 1AE

Telephone • 01371 856585
Website • www.danielbrewer.co.uk
E-mail • info@danielbrewer.co.uk



TOTAL APPROX. FLOOR
AREA: 1800 SQ. FT.

DANIEL BREWER
Bringing People and Property Together

NOTICE: This floorplan is NOT to be used for any engineering, surveying, structural, or planning purposes. Although great care has been taken to ensure accuracy, this drawing is intended for illustrative purposes only.

The numerical values and/or graphical representations of (but not limited to): position, relative size, dimensions, areas, shape, and type of (but not limited to): rooms, objects, walls and stairs are approximate only - no guarantee is made on either their precision or accuracy.

Disclaimer

These particulars, whilst believed to be accurate are set out as a general outline only for guidance and do not constitute any part of an offer or contract. Intending purchasers should not rely on them as statements or representation of fact, but must satisfy themselves by inspection or otherwise as to their accuracy. We have not carried out a detailed survey nor tested the services, appliances and specific fittings. Room sizes should not be relied upon for carpets

and furnishings. The measurements given are approximate. No person in this firm's employment has the authority to make or give any representation or warranty in respect of the property.

Daniel Brewer

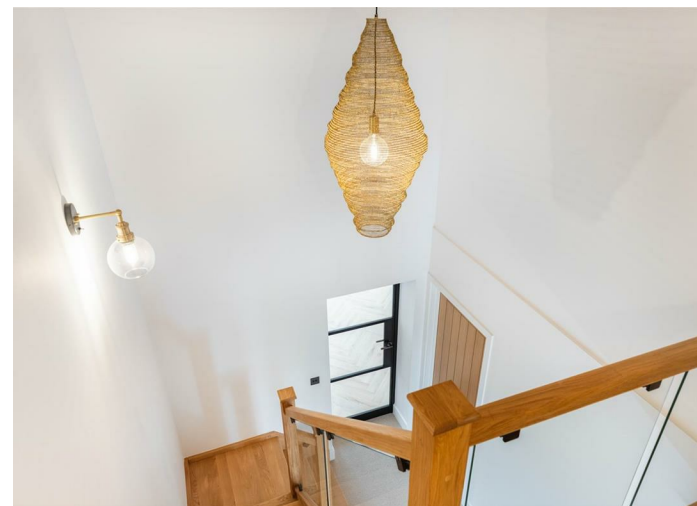
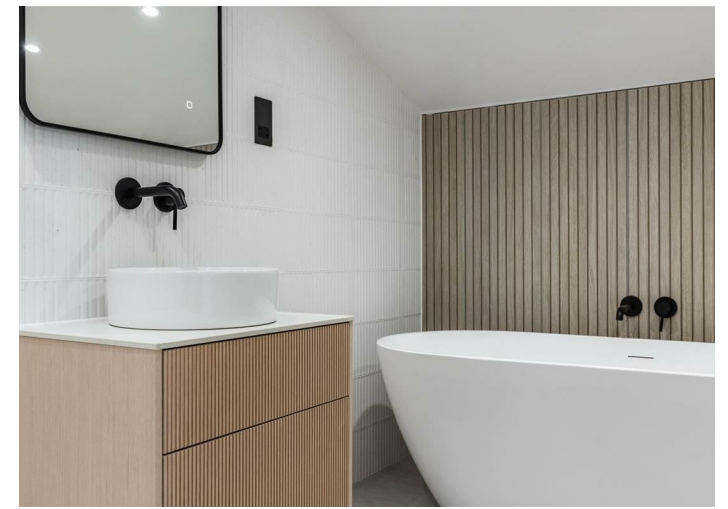
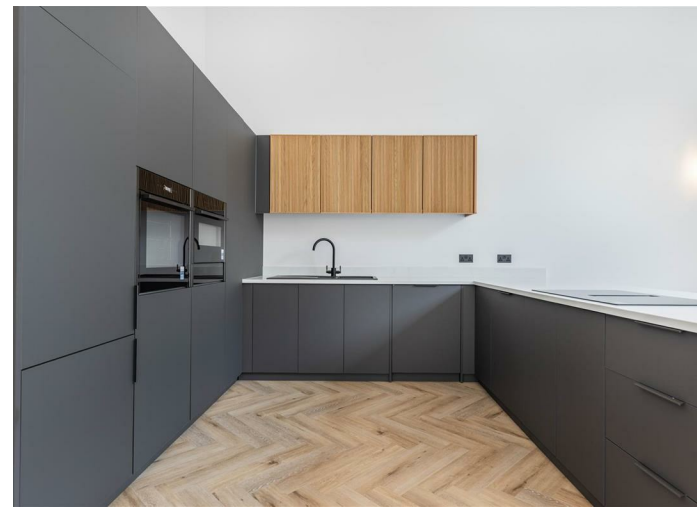
51 High Street
Great Dunmow
Essex, CM6 1AE

Telephone • 01371 856585
Website • www.danielbrewer.co.uk
E-mail • info@danielbrewer.co.uk



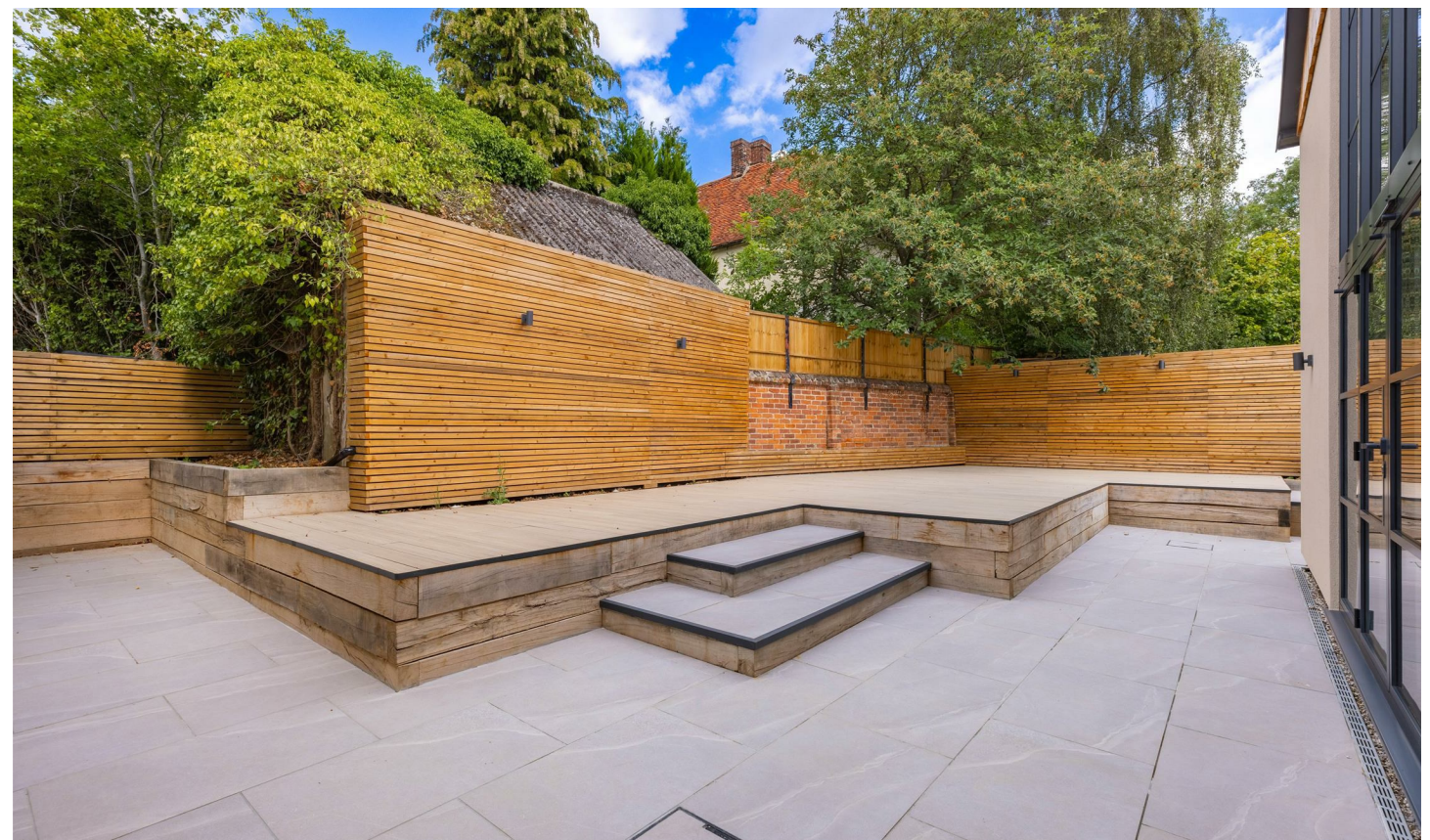
THAXTED ROAD, WIMBISH, SAFFRON WALDEN, ESSEX,
CB10 2XP

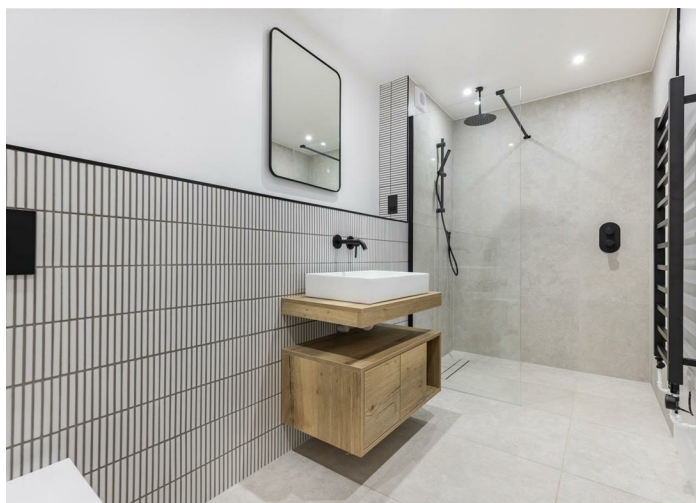
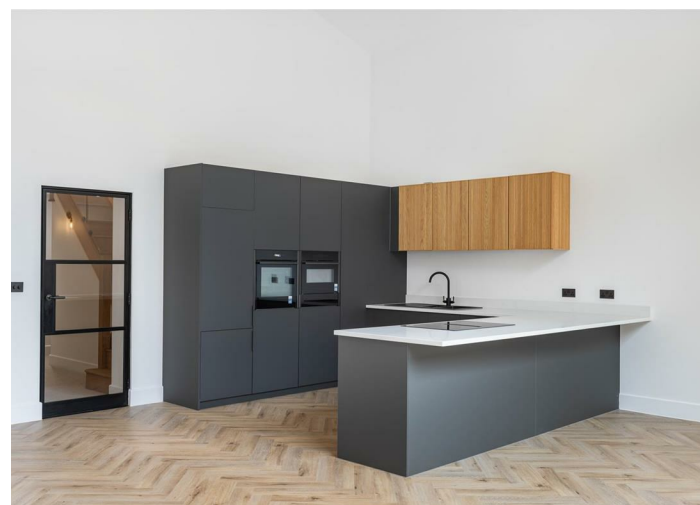
OFFERS OVER £700,000



**THAXTED ROAD
WIMBISH
SAFFRON WALDEN
ESSEX
CB10 2XP**

Daniel Brewer are excited to present this modern barn conversion located just outside the charming market town of Thaxted. This stunning property boasts a large open plan kitchen/dining/living area with a fully glazed two storey window, the other accommodation on the ground floor comprises: entrance hall, cloakroom, utility room, shower room, lounge/bedroom, study/bedroom. On the first floor is a large principal bedroom with dressing room facilities and an en-suite, externally the property boasts gated driveway parking for multiple vehicles and an enclosed multi-level rear courtyard garden.





En-Suite

Four-piece suite, low level WC, vanity wash hand basin with mixer tap and low level storage, oval bath with separate taps, walk in shower with glass screen and rainfall head, wall mounted heated towel rail, wall mounted mirror, wood wall panelling, partially tiled walls, tiled flooring, inset spotlights, shaver port.

Driveway Parking

Gravel driveway parking for two vehicles accessed via a private automated gate shared by three properties.

Gardens

The garden is a stylish and low-maintenance outdoor space, designed for both privacy and modern living. Neatly enclosed by feature panel timber fencing and mature trees, it offers a strong sense of seclusion while maintaining an open, airy feel.

A spacious stone patio extends directly from the house, providing an ideal spot for outdoor entertaining or relaxing. At the centre is a raised timber deck, perfect for dining or lounging, with integrated steps and clean-lined planting beds that add a soft touch of greenery.

Additional Information

Freehold title, new build barn conversion, air source heat pump heating, shared septic tank drainage, underfloor heating, 10 year build guarantee.

- **Three Double Bedrooms**
- **Open Plan Living/Kitchen/Dining Area**
- **Utility Room**
- **Shower Room & En-Suite Facilities To Principal**
- **Underfloor Heating Throughout Ground Floor**
- **Cloakroom**
- **Enclosed Rear Garden**
- **Driveway Parking For Multiple Vehicles**
- **10 Year New Build Warranty**
- **Private Complex Of Two New Build Country Homes**

Entrance Hall

23'7" x 7'2" (7.2 x 2.2m)

aluminium fully glazed door to front aspect, aluminium double glazed windows to side aspect, access to coat cupboard, underfloor heating, herringbone flooring, inset spotlights, various power points. Doors to: Utility Room, WC. Fully glazed door to: Open Plan Kitchen/Dining/Living Room.

WC

Frosted double glazed UPVC window to rear aspect, low level WC, vanity wash hand basin with mixer tap and low level storage, underfloor heating, parquet wood flooring, inset spotlights.

Open Plan Kitchen/Dining/Living

25'3" x 22'11" (7.7m x 7.0m)

Two-Storey high fully glazed window with French doors to rear aspect, various base and eye level units with Quartzwork surfaces over the top, integrated fridge freezer, integrated double oven and microwave oven, one and a half unit Granite sink with mixer tap and drainer unit, induction hob, breakfast bar seating for four people, exposed timbers, underfloor heating, herringbone flooring, wall mounted light fixtures, ceiling mounted light fixtures, various power points. Fully glazed door to: Inner Hallway.

Inner Hallway

12'1" x 7'10" (3.7m x 2.4m)

Stairway to first floor landing, access to under stairs storage cupboard, carpeted flooring, ceiling mounted light fixture, wall mounted light fixture various power points. Doors to: Study/Bedroom Three, Lounge/Bedroom Two, Shower Room.





Utility

10'9" x 7'6" (3.3m x 2.3m)

Various base and eye level units with Quartz work surfaces over, inset Granite sink with mixer tap, space for washing machine & separate tumble drier, underfloor heating, herringbone flooring, inset spotlights, cupboard down lighting, various power points.

Lounge/Bedroom Two

14'5" x 10'9" (4.4m x 3.3m)

Double glazed aluminium window to front aspect, underfloor heating, carpeted flooring, inset spotlights, various power points.

Study/Bedroom Three

13'5" x 9'6" (4.1m x 2.9m)

Double glazed aluminium window to front aspect, underfloor heating, carpeted flooring, inset spotlights, various power points.

Shower Room

Three-piece suite, low level WC, floating vanity wash hand basin with mixer tap and low level storage, walk in wet room shower with rainfall head and glass screen, wall mounted heated towel rail, wall mounted mirror, partially tiled walls, tiled walls, inset spotlights, extractor fan.

Landing

7'2" x 3'11" (2.2m x 1.2m)

Timber stairs with glass-panelled banister and glass panelled balustrade, herringbone flooring, ceiling mounted light fixture, various power points.

Principal Bedroom

24'11" x 21'7" (7.6m x 6.6m)

Double glazed aluminium window to front aspect, access to dressing area, two wall mounted radiators, carpeted flooring, inset spotlights, various power points.

